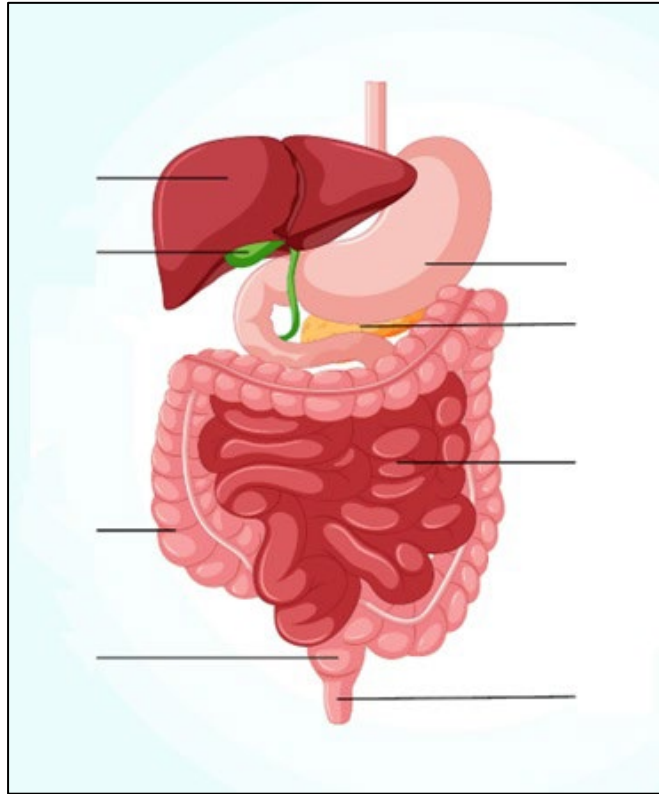


## Starter Activity One

Label the diagram of the Digestive System:



## Starter Activity Two

Read each of the following statements carefully.

Mark the statement with an 'F' if you think it is false and a 'T' if you think it is true.

☐

Chemical digestion begins in the mouth.

☐

Chyme enters the stomach via the oesophagus.

☐

Nutrients are mainly absorbed in the small intestine.

☐

A bolus passes through the pancreas before reaching the stomach.

☐

Proteins are broken down to amino acids in the stomach and small intestine.

☐

Amylase in the saliva breaks down fat into fatty acids.

☐

The gall bladder releases bile into the small intestine.

☐

The blood capillaries absorb amino acids and glucose but not fats.

☐

Carbohydrates are required by the body for growth, maintenance and repair of cells.

☐

The large intestine contains beneficial bacteria.

## Starter Activity Three

### Celebrity Heads

The teacher selects a few students to stand in front of a whiteboard.

The teacher writes one of the terms listed below behind each player so they cannot see it. Everyone will know the terms except the players standing in front of the whiteboard.

To find out what the term is, each player takes turns asking questions that will, hopefully, help them work out what their term is.

To win the game, a player must be the first to guess the term behind them.

Here are a list of words that could be used:

- Mouth
- Salivary Gland
- Tongue
- Oesophagus
- Stomach
- Small Intestine
- Large Intestines
- Rectum
- Villi
- Pancreas
- Gall Bladder
- Liver
- Bolus
- Chyme

## Starter Activity Four

In the table below:

<b>Name the three macronutrients.</b>			
<b>List the functions of each macronutrient in the body.</b>			
<b>Identify some food sources of each macronutrient.</b>			